



# INTEGRATED COMMUNITY PAEDIATRIC SERVICES

Nic Smith-Howell – Associate Director of ICPS



**MEDICAL SERVICES** **AUDIOLOGY** **CHILDREN'S NURSING**  
**PHYSIOTHERAPY** **OCCUPATIONAL THERAPY**  
**SPEECH AND LANGUAGE THERAPY**  
**CHILD AND FAMILY PSYCHOLOGY** **SCARC**

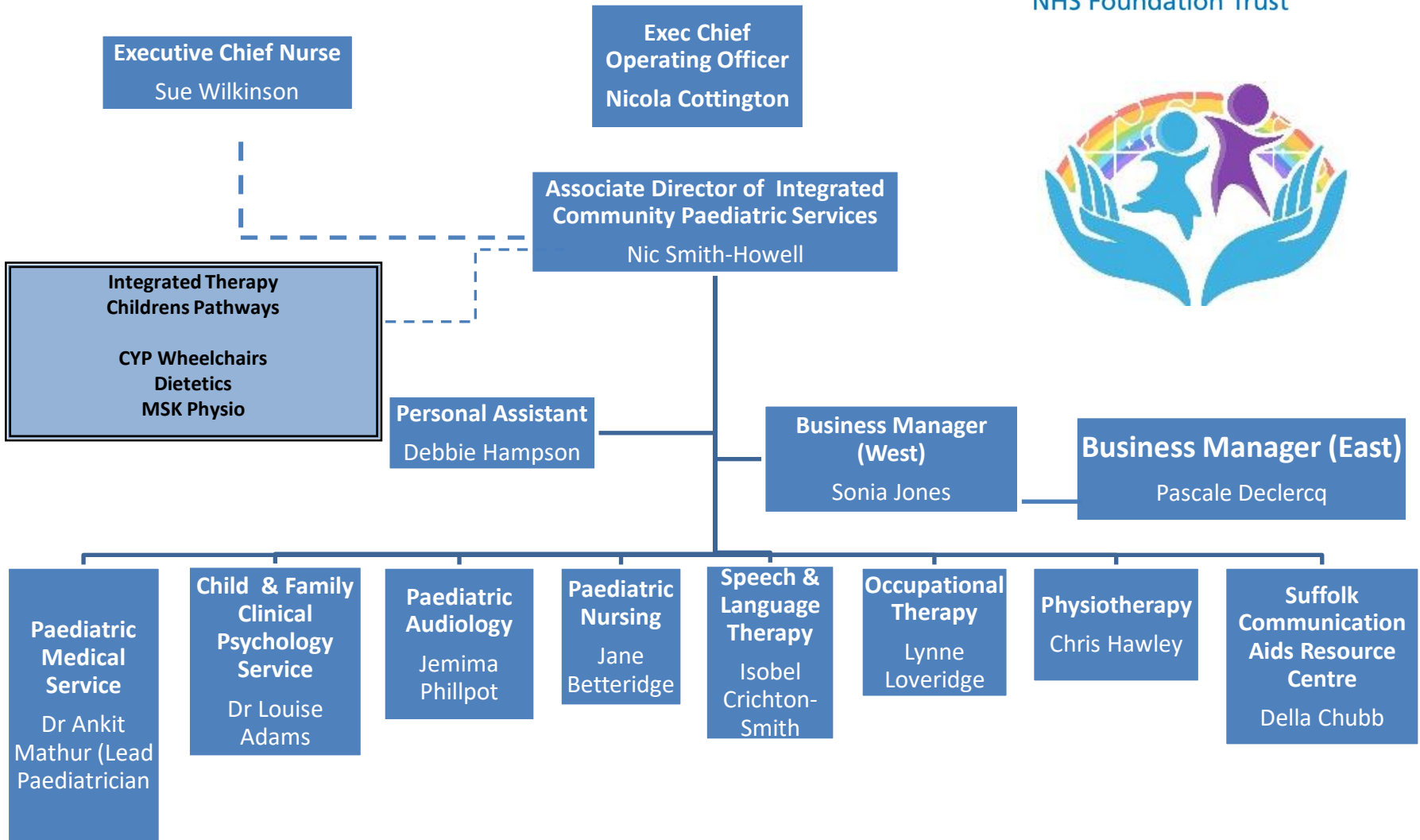
# Who are we?

We consist of eight core services which operate as part of an integrated model of delivery

**MEDICAL SERVICES** **AUDIOLOGY** **CHILDREN'S NURSING**  
**PHYSIOTHERAPY** **OCCUPATIONAL THERAPY**  
**SPEECH AND LANGUAGE THERAPY**  
**CHILD AND FAMILY PSYCHOLOGY** **SCARC**

- We primarily support children and young people (0 to 18/19 years) with medical, developmental, neuro-disabling and cognitive disabilities and longer term health conditions
- Teams also deliver targeted/specialist services
- Although “hosted” by WSFT we work across east and west Suffolk (and Thetford)

# ICPS Structure - East and West Suffolk



Our shared philosophy for service delivery and future development is as follows:

**“To provide a quality service to children and families with specialist and complex health needs in an equitable, timely, responsive and integrated way”**

## **Common principles for outcomes for children and young people**

Although individual services will have specific service aims (eg,improving communication, motor skills etc), there are common core outcomes for all services

- Focus on the needs of the child – assessment or intervention aims to enable each individual child to “be the best they can be”
- Achievement of developmental milestones – appropriate to condition
  - Establishment of individual targets and measurement of outcomes
- Enablement
  - access to a safe home and education environment.
  - Families, carers and children are supported to understand and manage their condition
- Resilience – access to service only when needed (specialist support)
- The right to be a child – achieving educational attainment
- Avoidance of harm - achieving health and or preventing unnecessary deterioration in condition

- Provide **SPECIALIST** clinical care to children in east and west Suffolk with wide-ranging developmental and complex neuro-disabling conditions in the community
- Many complex patients stay with our services throughout childhood (birth to 19)
- There is continuity but not 24 hour emergency care
- We coordinate care and work as part of a multi disciplinary team.
- Case management and care coordination
- The results of specialist and sometimes intensive monitoring or treatments may not be seen for many years
- Adoption Medical Advisor/ Children in Care/Safeguarding

A service for any child who has a suspected or confirmed hearing impairment.

This includes:

- Newborn Hearing Screening Programme (WSH only)
- Assessment, intervention and onward referrals as indicated
- Aetiological investigation as appropriate
- Joint working with Ipswich and West Suffolk Hospital for hearing aid provision and management
- Joint working with ENT for complex cases
- Liaison with school staff, advisory teachers, speech and language therapists and other health professionals
- Preparation for transition to adult services

- Provide Specialist Nursing care to children in east and west Suffolk with wide-ranging and complex medical conditions in the community, clinical nursing interventions'
- The team consists of:
  - Community Children's Nursing Team which provides clinical nursing interventions.
    - The Complex Care Team (packages of care for technology dependent children)
  - Specialist Health Visitors and Nurse Specialists and Nursery Nurses supporting the following pathways/service:
    - Attention Deficit Hyperactivity Disorder (ADHD – west caseload only)
    - Autism
    - Looked after Children
    - Child Development

- A service for children who have an identified or suspected motor, neurological or developmental problem, which includes:
  - Equipment provision & maintenance
  - Liaison with other professionals involved
  - Teaching for families and professionals
  - Support, education and onward referral
  - Support for transition to adult services
- Children are seen in a range of settings
- The service is focused on the child and their family using an integrated and multi-disciplinary approach as appropriate





# CHILDREN'S COMMUNITY OCCUPATIONAL THERAPY

A service for children who have an identified or suspected motor, neurological, sensory or developmental problem affecting their functional abilities. This involves:

- Postural Management: assessment positioning and review of seating and sleep systems.
- Manual handling advice, techniques and equipment advice.
- Support and advice for families and professionals to develop the child's skills and access to their environment.
- Recommendations to nurseries and schools to help the child reach their potential and preparation for transition.
- To help with self care, productivity and leisure in liaison with social care OT colleagues.

## Who do we see?

Children and young people who have a variety of difficulties, e.g:

- Unclear speech because sounds are muddled or missed out
- Slow or unusual development of spoken language
- Little or no spoken language
- Difficulties with chewing or eating and drinking
- Difficulties in understanding what people say to them
- stammered (or stuttered) speech
- Voice problems

## What do we do?

- Assess communication and eating/drinking
- Deliver therapy packages of care
- Provide training for parents and school staff
- Assess and provide communication aids
- Write reports after an initial assessment and discharge, and as part of the EHC Process

- The service works in the context of community paediatric services and not a mental health/CAMHS model - no direct external referral route currently
- Focus on <5yrs complex assessment within Child Development Centre
- Specialist interventions (Specialist attachment, sleep etc)
- Targeted, specialist assessment and intervention for young people up to age 14 with ASD but only if on the paediatric caseload
  - Significant increase in demand for input to ASD pathway – pre and post diagnostic
  - Increased need for enhanced diagnostic assessment
- Wider areas of development for psychological input to CYP with life limiting or long term disabling conditions – increasing demand
- Post diagnosis workshops
- Significant challenge associated with inadequate environment for service across the county (main base at Woodbridge Clinic)



## Suffolk Communication Aids Resource Centre

- The Suffolk Communication Aids Resource Centre (SCARC) provides a county wide service for children and young people (0 to 19) regarding their AAC (Alternative and Augmentative Communication) requirements.
- SCARC offers the following services to children and families/ carers/support staff:
  - Enquiries/Information service
  - Specialist assessment
  - Equipment loans following assessment
  - Training
  - On-going support and review as requested
  - Technical support and management of equipment on short or long term loan.
- New service development to extend offer to 19-25yr olds in line with SEND Action plan in place



# Thanks for listening

Further information on our services can be found at:  
[Integrated community paediatric services \(wsh.nhs.uk\)](http://wsh.nhs.uk)