



Information



Advice



Support

Special Educational Needs
and Disability Information,
Advice & Support Service

sendiass

SENDIASS –
who we are
and what we do



Information



Advice



Support



Education



Rights



EHC Plans

Special Educational Needs
and Disability Information,
Advice & Support Service

sendiass

SENDIASS is a free, statutory, impartial and confidential service for children and young people with special educational needs or disabilities (SEND) and for their parents/carers.

We aim to:



Information



Advice



Support



Give children, young people and families the **information and the confidence** they need to take a full part in decisions



Empower them so that they understand and feel clear about their options and can make their own choices going forwards.

Our impartiality means:



Information



Advice



Support



We work at 'arms-length' from the local authority



We offer information, advice and support which is based firmly in law and the SEND Code of Practice and we offer this in an unbiased way.



We are not influenced by a particular point of view or local policy and we do not judge.

We aim to help families have clear, accurate and relevant information that will help them take part in making decisions about their lives.

Our remit



Information



Advice



Support



We can offer advice and support for children and young people aged 0 – 25 years, if they need extra help with their learning or have a disability.

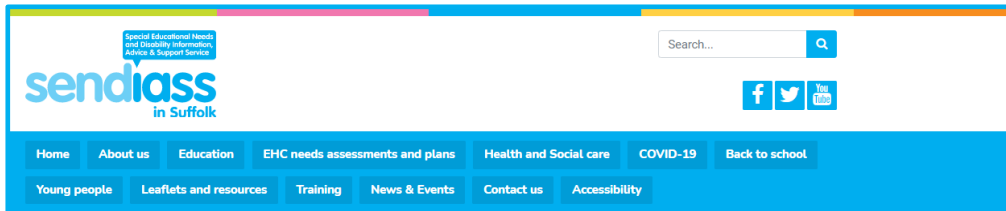


There is no need for a child or young person to have a diagnosis or identified SEN to contact us. Many people seek our advice when their child's needs are still unclear.

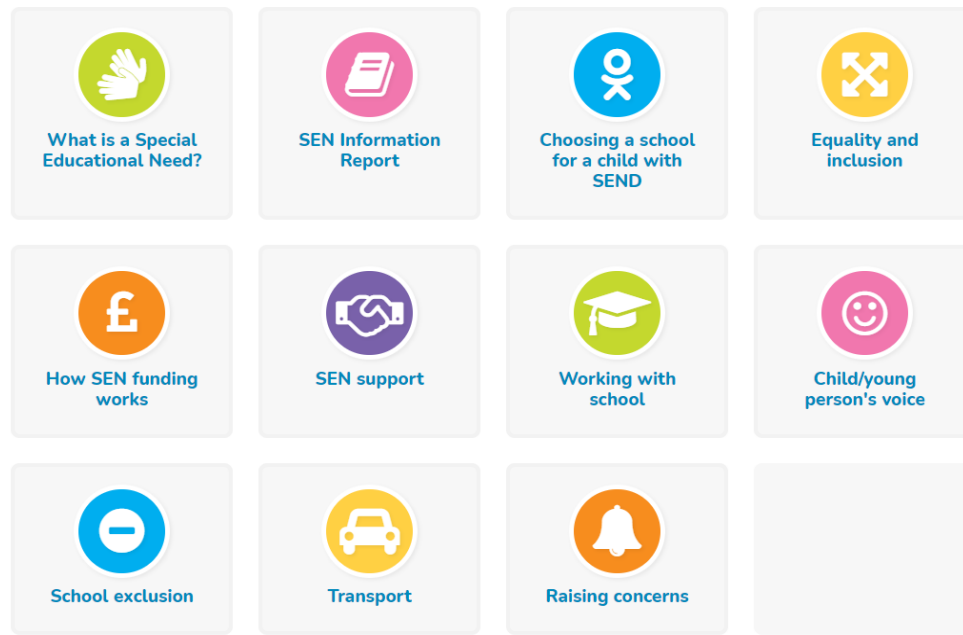


Our statutory remit includes providing training to practitioners around SEND. Our team has all undertaken accredited legal training.

Support & information via our impartial website, including FAQs



Education



Frequently asked questions (choosing a school)

1. Which schools are good at supporting children with SEND? ⇅
2. What happens once my 'in-year' application goes in? ⇅
3. I'm going through the EHC assessment process, where do I start finding a school? ⇅
4. I approached several local schools but they said they could not meet my child's needs ⇅
5. The school I approached said not enough funding to provide the support they need? ⇅
6. My child is not ready to start reception, can I defer to a later date? ⇅
7. My child is not ready for the next year group, can he/she repeat a year? ⇅
8. School declined a place (in-year), even though I know there are spaces, can they do this? ⇅
9. Current school say a special school would be more appropriate. What do I do next? ⇅
10. I would like to apply for a Special school, what is the process? ⇅

www.suffolksendiass.co.uk





Information



Advice



Support



Education



Rights



EHC Plans

Special Educational Needs
and Disability Information,
Advice & Support Service

sendiass

*‘The website is really clear
and so easy to navigate.’*

(Parent, November 2021)

Support and information via email, text or helpline



enquiries@suffolkssendiass.co.uk



01473 265210



ADVICE4ME to 87007



Contact form on our website

and through some face-to-face or virtual caseworker support



Information



Advice



Support



Education



Rights



EHC Plans

sendiass

'I have the information & knowledge to make informed decisions. Provided clarity.'

'I kind of knew the EHCP process but had some questions and they were answered brilliantly!'

'Thank you I feel so much clearer after speaking to you. I think I can do this next meeting on my own now'

'Thank you so much, it's been so helpful to speak to someone who is impartial and unbiased, so I feel I can have a clear head to make my own decision'

'Thank you so much for your BRILLIANT email. You have rekindled my hope after yesterday's upset'

'I always feel so much better once I've spoken to you. You have such a positive vibe I feel really empowered to move things forwards.'

(Sample comments September to December 2021)

Support & information via workshops/webinars



SEN support in Schools



EHC Needs Assessment



Annual Reviews



Drafting and Finalising an EHC Plan



Transition from Early Years to Primary School



Transition from Primary School to Secondary School



Working with Schools



Working with Parents



Governor SEND webinars

.. and through videos on our YouTube channel



<p>Education, Health & Care (EHC) needs assessments webinar recording</p> <p>45:44</p>	<p>SEN Support in Schools for Pupils with Speech, Language and Communication Needs Webinar recording</p> <p>50:17</p>	<p>SEN support in mainstream schools for pupils with coordination difficulties webinar recording</p> <p>35:14</p>	<p>Annual Reviews of EHC plans (Education, Health & Care plans) webinar recording</p> <p>45:37</p>	<p>SEN support in schools for pupils with specific learning difficulties webinar recording</p> <p>44:55</p>	<p>Support for pupils with special educational needs (SEN)</p> <p>21:20</p>
Education, Health and Care (EHC) needs assessments...	SEN support for pupils with speech, language and...	SEN support in mainstream schools for pupils with...	Annual Reviews of EHC plans	SEN support in school for pupils with specific learnin...	SEN support for pupils with special educational needs...
<p>What is a special educational need or SEN?</p> <p>6:13</p>	<p>ASSESS</p> <p>My teachers will work with the SENDCO to decide what sort of extra help and support I may need and talk to me about how I feel. Sometimes they will ask other professionals for advice.</p> <p>3:25</p>	<p>Preparing for Transition to Primary School Webinar Recording</p> <p>35:20</p>	<p>The Process of SEN Support in Schools</p> <p>11:02</p>	<p>Drafting and Finalising an Education, Health and Care Plan</p> <p>20:34</p>	<p>What happens when an EHC needs assessment is agreed?</p> <p>17:07</p>
What is a special educational need or SEN?	SEN support in an educational setting	Preparing for Transition to Primary School	The Process of SEN Support 1.2K views • 1 year ago	Drafting and Finalising an EHC plan	What happens when an EHC needs assessment is agreed
<p>What is an Education, Health & Care (or EHC) Plan?</p> <p>5:21</p>	<p>Who can request an Education, Health & Care (EHC) Needs Assessment and how?</p> <p>5:11</p>	<p>Education, Health & Care (EHC) Needs Assessments Webinar Recording</p> <p>45:17</p>	<p>Refusal to do an EHC Needs Assessment</p> <p>6:20</p>	<p>What is the purpose of an Education, Health & Care (EHC) Needs Assessment?</p> <p>5:05</p>	<p>What is Elective Home Education?</p> <p>24:09</p>
What is an EHC Plan? 138 views • 1 year ago	Who can request an EHC needs assessment and...	EHC Needs Assessment Webinar Recording	Refusal to do an EHC Needs Assessment	Purpose and threshold of an EHC Needs Assessment	What is Elective Home Education?
<p>1:15</p>	<p>1:08</p>	<p>2:09</p>	<p>0:38</p>	<p>1:10</p>	<p>1:41</p>
2018 01 30 Deciding whether to make a parental request...	Deciding whether to make a parental request for an...	Caroline's SENDIASS Journey 35 views • 7 months ago	Natalie's SENDIASS Journey 27 views • 7 months ago	Caroline's SENDIASS Journey 25 views • 7 months ago	Michaela's SENDIASS Journey
<p>Section 5 SEND Tribunal appeal form 35 EHC appeals except refusal to assess</p> <p>5:03</p>	<p>Section 4 SEND Tribunal appeal form 35 EHC appeals except refusal to assess</p> <p>7:58</p>	<p>Section Three SEND Tribunal appeal form 35 (EHC appeals except refusal to assess)</p> <p>5:23</p>	<p>Sections 1 & 2 SEND Tribunal Appeal Form 35 EHC appeals except Refusal to Assess</p> <p>4:19</p>	<p>Introduction SEND Tribunal Appeal Form 35 EHC appeals except Refusal to Assess</p> <p>6:25</p>	<p>Why Choose Mediation?</p> <p>9:07</p>
Appeal form 35 Section 5	Appeal Form 35 Section 4	Appeal form 35 Section 3	Appeal form 35 Sections 1 &	SEND Tribunal Appeal Form	Why choose mediation



Information



Advice



Support



Education



Rights



EHC Plans

Special Educational Needs
and Disability Information,
Advice & Support Service

sendiass

'Brilliant session – fantastic! I learnt loads – much more than I think I've learned ever! Amazed at how much support can be offered. Thanks so much.'

'It's not easy at the best of times, but SENDIASS is by far the best source of support I have received recently. Thanks so much.'

'Thank you so much. it has been very helpful. I wish I had seen this presentation many years ago.'

'Thank you for such a good course, it has been really helpful and informative. It has given me some good ideas and things to consider for how to support and help my son better.'

'Thank you so much. I'd never thought of it in that way before so will definitely make sure I'm better prepared so all these school meetings can be more useful.'

(Sample comments September to December 2021)

The way we work:



Information



Advice



Support

We have no remit to direct families, learning settings or the local authority.

We explore options to empower children, young people and parents to make informed choices for themselves.

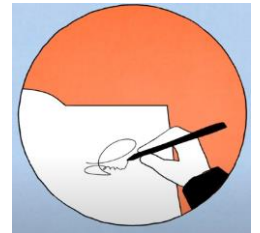
This may include helping families understand what the law expects to happen around education, health and social care matters and what is reasonable for learning settings to offer in terms of SEN support.

Depending on your individual circumstances, our support could include:

Support at and preparing for meetings



Help with understanding and completing paperwork



Help to take part in discussions and make decisions



Support to help you or your child clarify your views and find the confidence to express them



The way we work:



Information



Advice



Support

We aim to work in partnership with families, learning settings, and the local authority to help build positive relationships & explore positive solutions together.

Coproduction is at the heart of what we do

Special Educational Needs
and Disability Information,
Advice & Support Service

sendiass



Information



Advice



Support



Education



Rights



EHC Plans



www.suffolksendiass.co.uk



enquiries@suffolksendiass.co.uk



01473 265210



ADVICE4ME to 87007

