

Inclusion Services

Suffolk County Council

Ros Somerville

Assistant Director, Inclusion

Special Educational Needs and Disabilities (SEND) Funding and Provider Services

Commissioning, Provider Quality Assurance, Short Breaks Service

Specialist Education Services

Cognition and Learning

Communication and Interaction

Social, Emotional & Mental Health

Physical, Sensory, Medical

Alternative Tuition Service

Psychology & Therapeutic Services

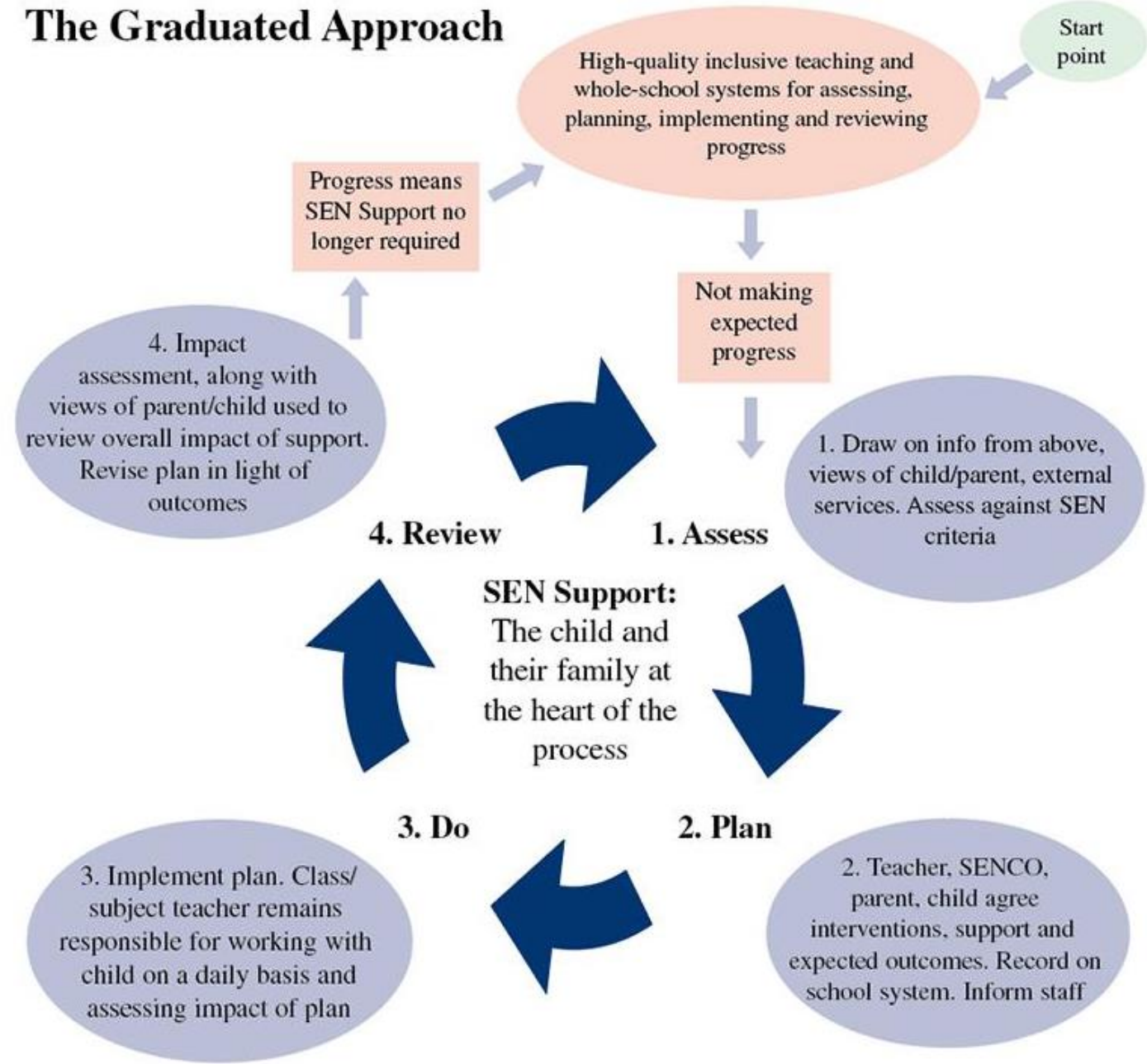
Educational Psychologists, Assistant Psychologists, Trainees

SEND Family Services

Education, Health and Care (EHC) needs assessments and plans

Permanent exclusions

The Graduated Approach



The Specialist Education Services (SES)

- SES work in partnership with all schools and education settings to promote inclusion, participation and achievement for children and young people with special educational needs or disabilities (SEND) aged 0 to 25 across Suffolk.
- We support the child/young person, the school/setting and the family, ensuring positive communications and learning experiences.

6 teams offering support, advice and guidance to schools and settings, CYP and their families

- **Cognition and Learning**
- **Communication and Interaction**
- **Social, Emotional & Mental Health (SEMH)**
- **Physical, Sensory**
- **Whole School Inclusion**
- **Alternative Tuition Service**

6 teams offering support, advice and guidance to schools and settings, CYP and their families

Other than for the sensory team no formal diagnosis or Education, Health and Care plan (EHCP) is needed to access the services. The education setting needs the consent of the parent/carer to make a referral. They should discuss the referral with the you so that aims and outcomes are shared.

More information

Here is a link to a YouTube presentation about our Specialist Education Services designed for families and available to all on the Suffolk Local Offer:

<https://youtu.be/mj2UEfNFrMQ>

- Training and resources for parents available
- Direct access – search the page and the team and contact details

Specialist Education Services (SES)

General Details

Comprising the Cognition & Learning, Communication & Interaction, Sensory & Physical, Social, Emotional and Mental Health and Whole School Inclusion Services, the Specialist Education Services are part of Suffolk County Council.

They work together to support schools and children with [SEND](#) across the whole of Suffolk in a variety of different ways, including support for children with visual and hearing impairments, dyslexia, behaviour needs, communication difficulties and others.

Click the links below to find out more about what each service does:

[Cognition & Learning \(C&L\) Service](#)

[Communication & Interaction \(C&I\) Service](#)

[Sensory & Physical \(S&P\) Service](#)

[Social, Emotional & Mental Health \(SEMH\) Service](#)

[Whole School Inclusion \(WSI\) Service](#)

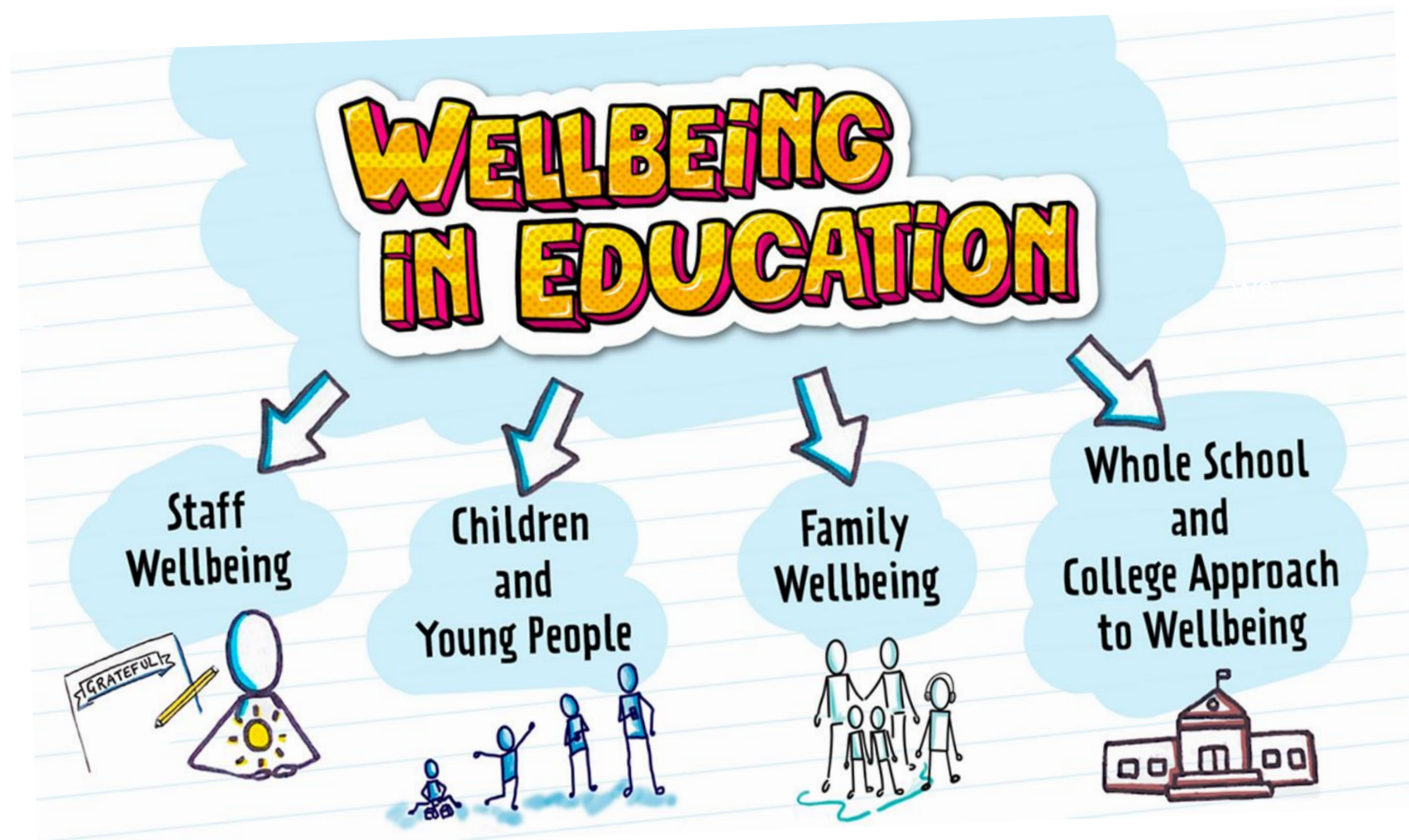


P&TS supporting inclusion

Some of the ways we can work with schools and settings, children, young people and their families:

- consultation, assessment and interventions (learning and therapeutic)
- person centred approaches and collaborative problem solving
- strategic development, whole school / college approaches & project work
- training, research and evaluation
- support and supervision for staff

We host the Suffolk Education Settings Mental Health Leads Network and have co-produced a resource, training and support programme to support Wellbeing in Education



Emotionally Based
EBSA
School Avoidance



Supporting young people with anxiety

This workshop is for parents of school aged children to help them understand anxiety better. The session covers: what is anxiety, why anxiety, how it effects the brain, how it effects the body, how it impacts on what we do and don't do and how parents can support their children/adolescents who might be struggling with anxiety. All dates are via Zoom.

[**Book a place for Tuesday 15 February at 7:15pm.**](#)

[**Book a place for Wednesday 21 March at 1:00pm.**](#)

Supporting our young people with low mood workshop

This workshop will help you to have a better understanding of why our young people are more vulnerable to low mood once they reach adolescence, the warning signs and some evidence based strategies to best support your young person.

[**Book a place for Tuesday 15 February at 6:00pm.**](#)

Getting the best out of your relationships with your young person

A workshop to support parents with effective communication to help relationships with their young people to thrive.

[**Book a place for Monday 14 February at 1:00pm session.**](#)

[**Book a place for Monday 14 February at 6:00pm session.**](#)

SEND Family Services

- Process Education Health Care needs assessments
- Collate and write Education Health & Care plans
- Track Annual Reviews
- Manage Decision making panels for
 - Specialist Placements
 - Alternative Provision/Pupil Referral Unit
 - In year Fair Access Panels
- Permanent Exclusion



Suffolk SEND Local Offer

Information, advice and services for children and young people with SEND in Suffolk – click the tiles below to find out more.



Our Local Offer helpline is now available - 0345 606 1490.

[What is the Suffolk Local Offer?](#)



[Frequently Asked Questions](#)

[You said, we did](#)

What is an Education, Health & Care Plan (EHC Plan)?



I'm thinking about requesting an EHC needs assessment



Who can request an EHC Needs Assessment?



When should I request an EHC Needs Assessment?



When should I hear back?



If an EHC Needs Assessment is requested, what can happen?



If an EHC Needs Assessment is agreed, what happens next?



Family Services - The Teams



Building on Better: Suffolk's SEND Strategy 2021-23

Our Vision

Working together, we will support all children and young people with SEND to meet their potential and live active, healthy and fulfilling lives as part of their communities. Children, young people and their families will be listened to, included and empowered, and have access to the right support at the right time from the right people.

Our SEND Priorities For 2021-23

1

Priority One: Communication

We will:

1. Further improve the Local Offer website, enabling easier navigation and search functionality for families.
2. Develop our communication strategy to increase accessibility and visibility for all users, including our use of multimedia communication.
3. Develop our work with the Young Person's Network to continue to improve the way we communicate with young people and ensure their voices are represented.
4. Promote awareness and understanding of SEND and SEN support services amongst families, practitioners, education settings and our wider communities.
5. Regularly seek feedback from families, young people and frontline practitioners on all aspects of our communication.
6. Keep young people, families and practitioners informed about the progress we are making across all our priority areas.

2

Priority Two: The Child/Young Person's Journey

We will:

1. Make the SEND journey for children and young people, clear and understandable across education, health and care, from early identification of needs.
2. Ensure that assessments and reviews involve the right people and are completed on time.
3. Ensure that assessment and review reports, including Education, Health and Care Plans are person-centred, specific and understandable.
4. Ensure that children and young people receive the support they require to make progress towards their identified outcomes and ambitions.
5. Embed the Graduated Response across education, health and care to provide timely early intervention and whole school inclusive practices.
6. Strengthen SEND operational practice by developing key roles within Social Care and Health, working closely with SEND and Education leaders.
7. Review and learn from SEND feedback including surveys, mediation, Tribunal appeals and Ombudsman outcomes to improve practice across the whole SEND system.

3

Priority Three: Commissioning and Services

We will:

1. Jointly review our SEND provision to understand demand, identify gaps and plan for future provision across education, health and care.
2. Increase the number of specialist education places available within Suffolk by completing the delivery of the current Suffolk SEND Capital Programme (2020-2024).
3. Complete our redesign of mental health services for children and young people and implement the new model.
4. Complete the development of the neuro-developmental pathway for children and young people and implement the new model.
5. Co-produce a new offer of care, support and education for children and young people supported by the Transforming Care Partnership that is based on a fuller understanding of their needs.
6. Extend the respite offer for under 18s to include children and young people with disabilities and challenging behaviours who are not currently supported by the Disabled Children's Team.

4

Priority Four: Preparing for Adulthood

We will:

1. Embed high-quality person-centred planning as our approach to transition planning for children and young people with SEND.
2. Empower children, young people and their families to make informed decisions about transitions through good quality advice, guidance and support.
3. Extend the local learning offer for 16-25 year olds to address the gaps identified in the 2021 SEND Sufficiency Review, with a focus on quality, options and progression.
4. Develop our health offer to better meet the needs of 16-25 year olds, to achieve straightforward, family centred transitions, including for adolescent mental health and those supported by Transforming Care.
5. Develop our social care offer to include care planning and ensure straightforward transitions, taking account of mental capacity and new safeguarding guidelines.
6. Provide good employment/self-employment support for young people with SEND and potential employers to extend the options leading into work.
7. Develop our Short Breaks for older young people and the support that enables them to develop their relationships and social skills.

What difference will we see as a result of this?

1. Children and young people with SEND will make progress and fulfil their potential - academically, emotionally and socially.
2. Children, young people and families will report that they can access the right support at the right time from the right people.
3. More children, young people and families will tell us that education, health and care services are improving.
4. Our children, young people and families will tell us that they trust services across education, health and social care.

IMPOWER

EDGE
WORK

Summary Integrated Delivery Plan and Progress & Impact Report



Introduction



Suffolk Local Offer
www.suffolklocaloffer.org.uk

